



Anne Lutge
071 509 0226
anne@propdata.net

Contact Anne's Branch

000 000 0000

12 Hillside Crescent

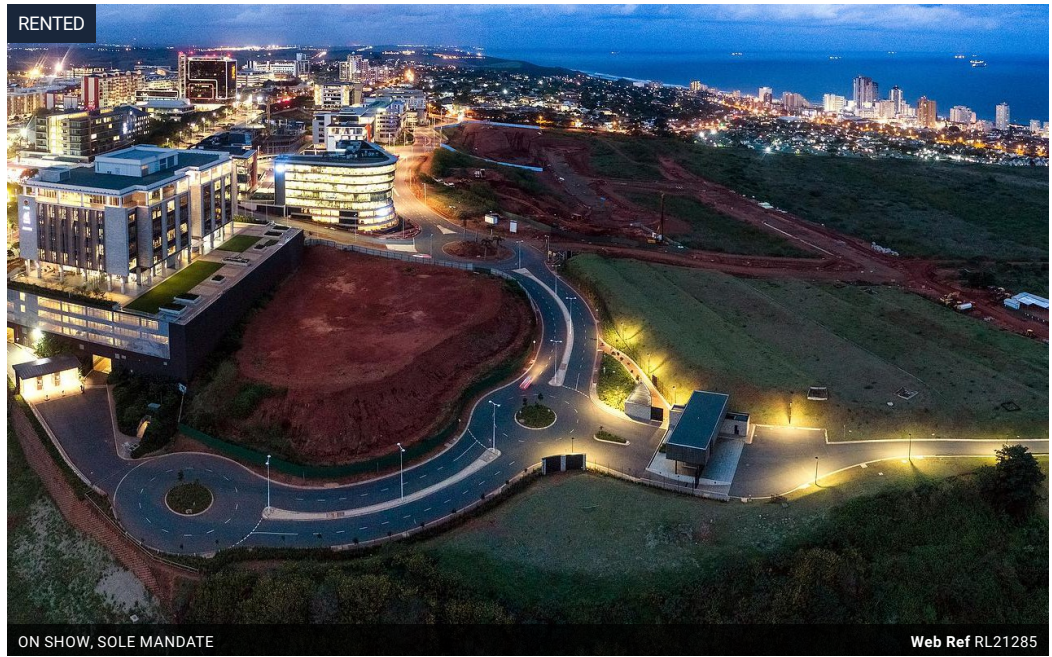
On Show

12:00 to 14:00

Wednesday, 12 June 2024

Directions

Testing



R99,999 pm

Lease Period Negotiable
Annual Escalation 7 %

Availability 07 May 2026

Deposit -

0 1 4

Farm Rented in Beverley Hills

Third listing for testing purposes

Features

Pets Allowed Yes

Interior

Bathrooms	1
Kitchens	1
Recep. Rooms	5
Studies	2
Furnished	Yes

Exterior

Garages	4
Carports / Parkings	6
Security	Yes
Dom. Accom.	3
Pool	Yes